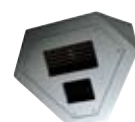


Extreme IP Imaging Quick Guide



BOSCH

Invented for life



| Bosch Extreme Imaging | | EX7 | EX30 | EX36 | EX80 | EX82 | EX85 |
|---------------------------|-------------------------------------|--|---------------------------------|---|--------------------------------------|---|--|
| Camera Information | Camera Type | Ceiling-mount No-grip | IP Infrared Imager | Corner-mount No-grip | IP Infrared Imager | IP Infrared Imager | Megapixel IP Infrared Imager |
| | Camera Options | Color or High Performance Day/Night | High Performance Day/Night | Color or High Performance Day/Night | Standard Resolution Color/Monochrome | High Resolution Color/Monochrome | Megapixel Color/Megapixel Monochrome |
| Imaging | Image Sensor Type | 1/3" CCD | 1/3" CCD | 1/3" CCD | 1/3" CCD | 1/3" CCD | 1/2" CMOS Color Sensor, 3.1 Megapixel 1/2" CMOS Mono. Sensor, 3.1 Megapixel |
| | Day/Night | Optional | Yes | Optional | Yes | Yes | Yes |
| | IR Sensitive | Optional | Yes | Optional | Yes | Yes | Yes |
| | Dynamic Range (WDR) | No | No | No | No | No | 60 dB |
| | Pan/Tilt/Zoom (PTZ) | No | No | No | No | No | Digital PTZ |
| | Intelligent Video Analytics (IVA)** | Yes | Yes | Yes | Yes | Yes | No |
| | Tamper Detection | Yes | Yes | Yes | Yes | Yes | No |
| | Video Motion Detection | Yes | Yes | Yes | Yes | Yes | Yes (Programmable Mask) |
| | Backlight Compensation | No | No | No | No | No | Yes |
| | Auto Black | No | No | No | No | No | No |
| | Lens | 4-9 mm Auto-iris, IR Corrected 9-22 mm Auto-iris, IR Corrected 5-50 mm Auto-iris, IR Corrected | 5-50 mm Auto-iris, IR Corrected | 2.5 mm, 3.6 mm | 4-9 mm Auto-iris, IR Corrected | 4-9 mm Auto-iris, IR Corrected 9-22 mm Auto-iris, IR Corrected | 8mm, 12 mm, 25 mm, 50 mm |
| Sensitivity (lux) | Minimum Illumination (day mode) | 2.7 F1.4 Color | 0.02 F1.4 Day/Night | 2.7 F1.4 Color | 1.0 F2 | 2.7 F1.4 | 1.0 F1.4 |
| | Extended Sensitivity (night mode) | 0.06 F1.4 Day/Night | 0 - Active IR Models | 0.06 F1.4 (Non-IR D/N Models) 0 - Active IR Models | 0 - Active IR Models | 0 - Active IR Models | 0 - Active IR Models |
| Infrared | Wavelength | n/a | 850 nm or 940 nm | 850 nm or 940 nm | 850 nm or 940 nm | 850 nm or 940 nm | 850 nm |
| | Night Vision Maximum Range | n/a | 350 ft. (~100 m) @ 850 nm | 30 ft. @ 850 nm | 200 ft. (60 m) @ 850 nm | 250 ft. (75 m) @ 850 nm | 420 ft. (128 m) @ 850 nm |
| IP Streaming | Compression/Multistreaming | (2) MPEG-4 (1) JPEG | (2) MPEG-4 (1) JPEG | (2) MPEG-4 (1) JPEG | (2) MPEG-4 (1) JPEG | (2) MPEG-4 (1) JPEG | 5 JPEG Streams |
| | Multi-resolution Windowing | No | No | No | No | No | Up to 8 |
| | Images Per Second Color (max.) | 30 @ 4CIF | 30 @ 4CIF | 30 @ 4CIF | 30 @ 4CIF | 30 @ 4CIF | 30 @ 1280 x 1024 |
| | Maximum Resolution | 704 x 480 (4CIF) | 704 x 480 (4CIF) | 704 x 480 (4CIF) | 704 x 480 (4CIF) | 704 x 480 (4CIF) | 2040 x 1530 |
| Communication | Hybrid (composite video output) | Yes | Yes | Yes | Yes | Yes | No |
| | Ethernet | 10/100 Base T | 10/100 Base T | 10/100 Base T | 10/100 Base T | 10/100 Base T | 10/100 Base T |
| | Alarm Input/Output | No | No | No | No | No | No |
| | Local via Built-in OSD | No | No | No | No | No | No |
| Power | Input Voltage | 12-24 VAC or VDC | 12-24 VAC or VDC | 12-24 VAC or VDC | 12-24 VAC or VDC | 12-24 VAC or VDC | 12-24 VAC or VDC |
| | Power Over Ethernet (POE) | No | No | No | No | No | No |
| | Power Consumption | 5W | 36W (with IR) | 11W Max. (with IR) | 36W Max. | 36W Max. | 24W Max. |
| Environmental | Operating Temperature | -13° to 140° F | -58° to 122° F | -58° to 122° F | -58° to 122° F | -58° to 122° F | -40° to 122° F |
| | Vandal Resistant | Yes | No | Yes | No | No | No |
| | All-weather Rating | IP66 | IP67 / NEMA4 | n/a | IP67 / NEMA4 | IP67 / NEMA4 | IP67 / NEMA4 |

Extreme IP Imaging Quick Guide



BOSCH

Invented for life

Key Features

Ordering Information

| EX7 | EX30 | EX36 | EX80 | EX82 | EX85 |
|--|---|--|--|---|---|
| <ul style="list-style-type: none"> US Patented No-Grip anchor-free design is impossible to grip or hang from, providing maximum safety for high risk environments such as prison cells and hospitals Innovative 45° tilt eliminates blind spots and enables vandal resistant surveillance of the entirety of a 15 ft. x 15 ft. room, including of the floor beneath the camera itself Available with active infrared night vision at 940 nm for covert illumination and effective night-time imaging under any ambient lighting conditions IVA (Intelligent Video Analysis)-ready for intelligence at the edge, detecting and alerting for user-defined events such as lines being crossed, loitering and objects left behind or removed from the scene IP Infrared Imaging design harnesses the power of infrared illumination to deliver outstanding images day or night, integrating seamlessly with existing IP network infrastructure iSCSI recording | <ul style="list-style-type: none"> Award-winning Black Diamond technology combined with precision engineered optics for High-Fidelity detection-level night-time imaging performance to 350 ft. (~100 m) in total darkness Day/Night 550 TVL color / 570 TVL monochrome with mechanical filter technology IVA (Intelligent Video Analysis)-ready for intelligence at the edge, detecting and alerting for user-defined events such as lines being crossed, loitering and objects left behind or removed from the scene IP Infrared Imaging design harnesses the power of infrared illumination to deliver outstanding images day or night, integrating seamlessly with existing IP network infrastructure Black Diamond illumination reduces night-time image noise for improved compression performance and low bit rates while delivering the necessary details for effective night-time function of video analytics iSCSI recording Field-proven NEMA4X all-weather design for long-term reliable performance in harsh environments | <ul style="list-style-type: none"> US Patented No-Grip anchor-free design is impossible to grip or hang from, providing maximum safety for high risk environments such as prison cells and hospitals Innovative 45° tilt eliminates blind spots and enables vandal resistant surveillance of the entirety of a 15 ft. x 15 ft. room, including of the floor beneath the camera itself Available with active infrared night vision at 940 nm for covert illumination and effective night-time imaging under any ambient lighting conditions IVA (Intelligent Video Analysis)-ready for intelligence at the edge, detecting and alerting for user-defined events such as lines being crossed, loitering and objects left behind or removed from the scene IP Infrared Imaging design harnesses the power of infrared illumination to deliver outstanding images day or night, integrating seamlessly with existing IP network infrastructure iSCSI recording | <ul style="list-style-type: none"> Award-winning Black Diamond technology combined with precision engineered optics for High-Fidelity detection-level night-time imaging performance to 200 ft. (60 m) in total darkness 480 TVL 1/3" color CCD for vivid daytime color, 420 TVL 1/3" monochrome CCD for award-winning night vision IVA (Intelligent Video Analysis)-ready for intelligence at the edge, detecting and alerting for user-defined events such as lines being crossed, loitering and objects left behind or removed from the scene IP Infrared Imaging design harnesses the power of infrared illumination to deliver outstanding images day or night, integrating seamlessly with existing IP network infrastructure Black Diamond reduces night-time image noise for improved compression performance and low bit rates while delivering the necessary details for effective night-time function of video analytics iSCSI recording Field-proven NEMA4X all-weather design for long-term reliable performance in harsh environments | <ul style="list-style-type: none"> Award-winning Black Diamond technology combined with precision engineered optics for High-Fidelity detection-level night-time imaging performance to 250 ft. (75 m) in total darkness 550 TVL 1/3" color for outstanding daytime color, 550 TVL 1/3" mono CCD for award-winning night vision IVA (Intelligent Video Analysis)-ready for intelligence at the edge, detecting and alerting for user-defined events such as lines being crossed, loitering and objects left behind or removed from the scene IP Infrared Imaging harnesses the power of infrared illumination to deliver outstanding images day or night, integrating seamlessly with existing IP network infrastructure Black Diamond reduces night-time image noise for improved compression performance and low bit rates while delivering the necessary details for effective night-time function of video analytics iSCSI recording Field-proven NEMA4X all-weather design for long-term reliable performance in harsh environments | <ul style="list-style-type: none"> 3.1 megapixel day sensor / 1.3 megapixel night-time sensor for superior image detail, a 10x increase in resolution over typical high performance CCDs for 24/7 optimized performance of video analytics Award-winning Black Diamond technology for the industry's most advanced night vision High-definition, detection-level night vision at 420 ft. (128 m) in total darkness Innovative Bit-Reduce technology minimizes bit rate without compromising image quality IP Infrared Imaging design optimizes the combined benefits of IP and Infrared for critical imaging applications Field-proven IP67 all-weather design for long-term reliable performance in harsh environments Reduced long-term costs: savings on fewer cameras, reduced installation costs, greater scalability |

| EX7 Ordering Information | EX30 Ordering Information | EX36 Ordering Information | EX80 Ordering Information | EX82 Ordering Information | EX85 Ordering Information |
|--------------------------|---------------------------|---------------------------|---------------------------|---------------------------|---------------------------|
| NEC-070V04-21W | NEI-308V05-11B | NEC-360F02-21W | NEI-808V04-21B | NEI-828V04-21B | EX85D8IP08B |
| NEC-070V04-11W | NEI-309V05-21B | NEC-360F02-11W | NEI-808V04-11B | NEI-828V04-11B | EX85D8IP12B |
| NEC-070V09-21W | NEI-309V05-11B | NEC-360F04-21W | NEI-809V04-21B | NEI-829V04-21B | EX85D8IP25B |
| NEC-070V09-11W | NEI-308V05-21W | NEC-360F04-11W | NEI-809V04-11B | NEI-829V04-11B | EX85D8IP50B |
| NEC-070V05-21W | NEI-308V05-11W | NEI-368F02-21W | NEI-808V04-21W | NEI-828V09-21B | |
| NEC-070V05-11W | NEI-309V05-21W | NEI-368F02-11W | NEI-808V04-11W | NEI-828V09-11B | |
| NEN-070V04-21W | NEI-309V05-11W | NEI-368F04-21W | NEI-809V04-21W | NEI-829V09-21B | |
| NEN-070V04-11W | | NEI-368F04-11W | NEI-809V04-11W | NEI-829V09-11B | |
| NEN-070V09-21W | | NEI-369F02-21W | | NEI-828V04-21W | |
| NEN-070V09-11W | | NEI-369F02-11W | | NEI-828V04-11W | |
| NEN-070V05-21W | | NEI-369F04-21W | | NEI-829V04-21W | |
| NEN-070V05-11W | | NEI-369F04-11W | | NEI-829V04-11W | |
| | | NEN-360F02-21WWM | | NEI-828V09-21W | |
| | | NEN-360F02-11WWM | | NEI-828V09-11W | |
| | | NEN-360F04-21WWM | | NEI-829V09-21W | |
| | | NEN-360F04-11WWM | | NEI-829V09-11W | |
| | | NEI-368F02-21WWM | | | |
| | | NEI-368F02-11WWM | | | |
| | | NEI-368F04-21WWM | | | |
| | | NEI-368F04-11WWM | | | |
| | | NEI-369F02-21WWM | | | |
| | | NEI-369F02-11WWM | | | |
| | | NEI-369F04-21WWM | | | |
| | | NEI-369F04-11WWM | | | |